

*The Royal Society*

---

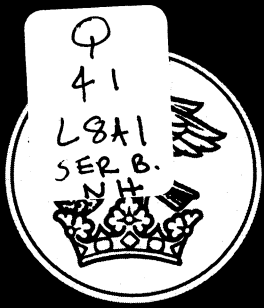
**Proceedings:  
Biological Sciences**

---

---

Volume **249** Pages 223–332 Number **1326** 22 September 1992

Proceedings of the Royal Society of London **SERIES B**



## PROCEEDINGS: BIOLOGICAL SCIENCES

**Editor: Professor B. C. Clarke**, Department of Genetics, Queen's Medical Centre, Clifton Boulevard, Nottingham NG7 2UH (Tel. 0602 420639/709263; Fax. 0602 422225)

### Editorial Board

- Dr M. Ashburner**, Department of Genetics, Downing Street, Cambridge CB2 3EH (Tel. 0223 333969; Fax. 0223 333992)  
**Professor M. A. Ferguson-Smith**, Department of Pathology, Tennis Court Road, Cambridge CB2 1QP (Tel. 0223 333691; Fax. 0223 333346)  
**Professor W. G. Hill**, Institute of Cell, Animal & Population Biology, Division of Biological Sciences, University of Edinburgh, Zoology Building, West Mains Road, Edinburgh EH9 3JT (Tel. 031-650 5456; Fax. 031-667 3210)  
**Professor D. A. Hopwood**, John Innes Institute, Colney Lane, Norwich NR4 7UH (Tel. 0603 52571; Tlx 975122; Fax. 0603 56844)  
**Sir Andrew Huxley**, Trinity College, Cambridge CB2 1TQ (Tel. 0223 338586; home 0223 840207; Fax. 0223 338564)  
**Professor A. J. Jeffreys**, Department of Genetics, The University, University Road, Leicester LE1 7RH (Tel. 0533 523435; Fax. 0533 523489)  
**Professor L. N. Johnson**, Department of Zoology, Laboratory of Molecular Biophysics, The Rex Richards Building, South Parks Road, Oxford OX1 3QU (Tel. 0865 275365)  
**Professor J. R. Krebs**, Edward Grey Institute of Field Ornithology, Department of Zoology, South Parks Road, Oxford OX1 3PS (Tel. 0865 271165; Fax. 0865 310447)  
**Professor M. F. Land**, School of Biological Sciences, University of Sussex, Lewes Road, Brighton BN1 9QG (Tel. 0273 606755; Fax. 0273 678433)  
**Dr P. A. Lawrence**, MRC Laboratory of Molecular Biology, University Medical School, Hills Road, Cambridge CB2 2QH (Tel. 0223 880505)  
**Professor C. J. Leaver**, Department of Plant Sciences, University of Oxford, South Parks Road, Oxford OX1 3RA (Tel. 0865 275143; Fax. 0865 275144)  
**Dr A. D. McLachlan**, MRC Laboratory of Molecular Biology, Hills Road, Cambridge CB2 2QH (Tel. 0223 248011; Fax. 0223 213556)  
**Professor R. M. May**, Department of Zoology, South Parks Road, Oxford OX1 3PS (Tel. 0865 271170; Fax. 0865 310447)  
**Professor J. Maynard Smith**, School of Biological Sciences, University of Sussex, Lewes Road, Brighton BN1 9QG (Tel. 0273 606755; Fax. 0273 678433)  
**Professor R. H. Michell**, Department of Biochemistry, University of Birmingham, P.O. Box 363, Birmingham B15 2TT (Tel. 021-414 5413; Fax. 021-414 3982)  
**Professor N. A. Mitchison**, Department of Biology, Medawar Building, University College London, Gower Street, London WC1E 6BT (Tel. 071-387 7168; Fax. 071-380 7026)  
**Professor R. N. Perham**, Department of Biochemistry, Tennis Court Road, Cambridge CB2 1QW (Tel. 0223 333663; Tlx 81240; Fax. 0223 333345)  
**Sir David Weatherall**, Nuffield Department of Clinical Medicine, John Radcliffe Hospital, Headington, Oxford OX3 9DU (Tel. 0865 817632; Fax. 0865 222501)

**Corresponding Editors:** These are listed inside the back cover, with their telephone and fax. numbers.

**Statistical Consultants:** Dr J. F. Y. Brookfield; Professor D. J. Finney

---

### NOTICE TO AUTHORS

**Scope.** *Proceedings* series B welcomes papers on any aspects of biological science. It publishes, rapidly, announcements of important results, normally not exceeding 4000 words (five printed pages). The Editor will also consider short reviews, but only if they contain original and interesting new ideas. Short additions to, or criticisms of, papers that have already been published (subject to their originality and interest, and to the rules of good manners) will also be acceptable. Preliminary reports ('letters') are not encouraged. The target publication time is three months from receipt (excluding any period that the manuscript is in the hands of the authors).

**Submission.** There is no page charge. Authors should send their papers directly to the Editor. Up to six keywords should be supplied with the typescript. Four copies of the typescript and figures are required, and one set of originals of any figures should also be submitted. Papers should be prepared in accordance with the Instructions to Authors printed at the end of every issue of *Proceedings B* and also available from the Editorial Office.

**Offprints.** Authors will receive 50 free offprints.

---

COPYRIGHT: © 1992 The Royal Society

Except as otherwise permitted under the Copyright, Designs and Patents Act, 1988, this publication may only be reproduced, stored or transmitted, in any form or by any other means, with the prior permission in writing of the publisher, or, in the case of reprographic reproduction, in accordance with the terms of a licence issued by the Copyright Licensing Agency. In particular, the Society permits the making of a single photocopy of an article from this issue (under Sections 29 and 38 of this Act) for an individual for the purposes of research or private study.

---

### SUBSCRIPTIONS

*Proceedings of the Royal Society* series B (ISSN 0962-8452) is published in monthly parts. The subscription price in 1993, including postage, is £200 in the U.K. and £213 (U.S. \$426) overseas. Air-speeded post is available for overseas subscribers at a small extra charge. Full details of subscription rates may be obtained on request from the Publications Sales and Marketing Department, The Royal Society, 6 Carlton House Terrace, London SW1Y 5AG.